

PROCESS WATER CONTROL SOLUTIONS



PRIMEX

WWW.PRIMEXCONTROLS.COM

NOTICE: THIS DRAWING CONTAINS PROPRIETARY INFORMATION AND IT SHALL NOT BE USED OR REPRODUCED OR ITS CONTENTS DISCLOSED IN WHOLE OR IN PART, WITHOUT PRIOR WRITTEN CONSENT.

DRAWING NO.	REV.	SHEET	SCALE	SIZE	TITLE
-------------	------	-------	-------	------	-------



PRIMEX

YOUR PRIME CHOICE FOR PROCESS WATER CONTROL SOLUTIONS

With thousands of panels installed across North America, our team, backed by hundreds of years of experience, designs and builds complete control solutions to meet your specific needs, no matter how unique.

Investing in research, new product development and testing are our core values. Our team is continually designing innovative control products to meet the growing demands of the industrial process water market.



APPLICATIONS

- RO Industrial Water Processing
- Wastewater Treatment
- Chemical Dosing
- Drinking Water Production
- Desalination
- Water Reclamation
- Process Water Treatment
- Condensate Treatment
- Pressure Booster Systems
- Irrigation Systems
- Oil and Gas Water Treatment
- Mining Water Treatment
- Food Processing
- Conveyor Control
- Blower and Fan Control

FEATURES

- Process PRO™ Water Processing Software
- Programmable Logic Controllers (PLC)
- Human Machine Interface (HMI)
- Remote Monitoring
- SCADA Systems
- Telemetry/Alarm Dialers
- VFD's
- Reduced Voltage Starters
- Service Entrance Rating
- Multiple Pump Control
- User Specified Components

THIRD PARTY APPROVALS

- 508A Listing for Industrial Control Panels
- UL 698A Listing for Enclosed Industrial Control Panels with Circuit Extensions to a Hazardous Location
- UL NNNY Listing Class I, Division 1 and 2 Locations
- CSA Certification
- cUL Certification





ENGINEERING ASSISTANCE

PRIMEX® provides customers with over 40 years of expertise in process control and hundreds of years of combined applied engineering and electrical controls experience using the latest technology to deliver energy efficient, cost effective products.

From concept to completion, our engineers provide:

- Process flow schematics
- Suggested specifications
- Budgetary estimates
- Electrical control system design
- Equipment evaluation
- Pilot tests



SYSTEM DESIGN AND SUPPORT

With four locations to serve you, our electrical engineering team is the largest in the wastewater industry, providing process water control solutions based on individual customer specifications and system requirements.

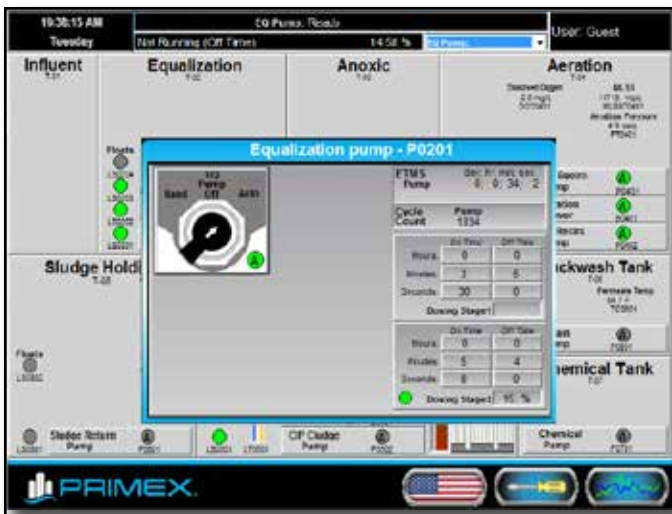
Design Engineers work together along with CAD Specialists and Documentation Engineers to provide customers with custom solutions and the best one-on-one product support in the industry:

- Accurate and timely quotations
- Detailed submittals (AutoCAD schematic wiring diagrams, enclosure layout drawings, bill of material, and more)
- Project management
- Design and configuration
- System assembly
- Comprehensive testing
- “As built” packages (schematics, color photos and bill of materials)
- Field start-up assistance
- Exceptional technical support and training
- Engineering specifications
- Warranty as quoted
- Agency approvals (UL, CSA and more)



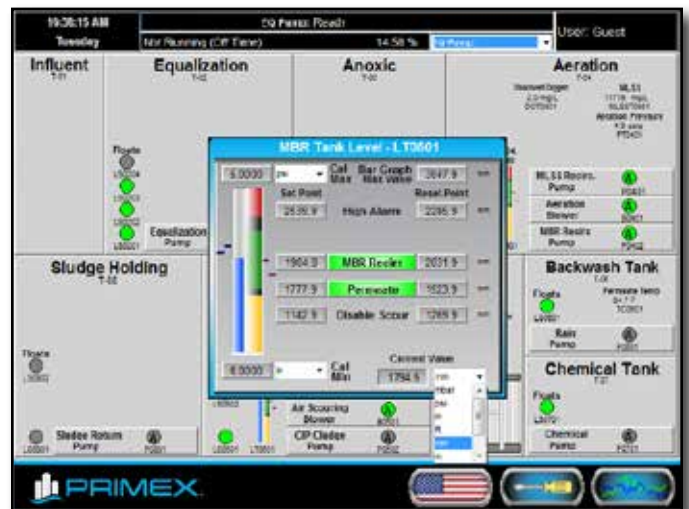
PROCESS PRO™

Process PRO™ offers modular programming for water processing control systems and a comprehensive suite of process control building blocks for water systems. Let PRIMEX® Process PRO™ experts work with you on your process and instrumentation needs. Pre-designed to provide you with sophisticated features without the fees. Expertise in multiple processes including RO, MBR, MBBR, SBR, DAF and Extended Aeration.



ONE TOUCH ACCESS

to comprehensive setting consoles for each process device



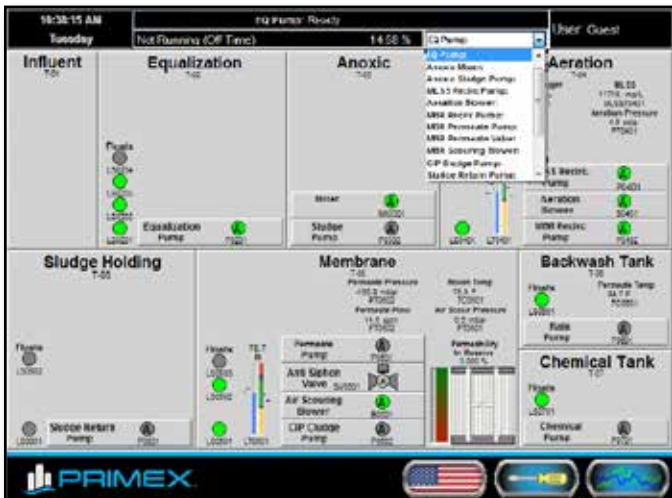
REAL TIME UNITS CONVERSION

for all analog display and set point values



SOFTWARE FEATURES

- International programming standard IEC61131-3
- Language selection for global applications
- Robust time and test hardened core code
- Reduced lead time and costs
- Easily adaptable to field changes
- Smoother start ups



DASHBOARD STYLE DISPLAY

with scrolling messages and status bars provide maximum process data on a single screen



ADVANCED FUNCTIONALITY

and web connectivity built-in



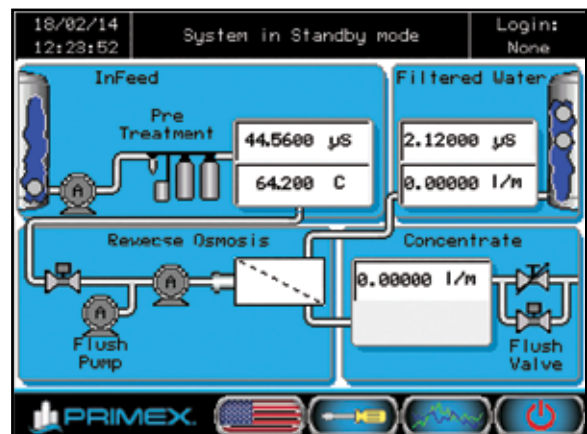
FILTRATION SOLUTIONS AND RO CONTROLS

For jobs that require Filtration systems, PRIMEX® provides pre-engineered Filtration skids containing a permeate pump, flow meter, air scour blower, chemical feed pump(s), PRIMEX® control panel, permeate storage tank, structural frame, valves, instrumentation and piping all pre-plumbed. The designs are user friendly and provide easy connections for multiple submerged membranes.

For RO applications, PRIMEX® offers a fully developed and highly configurable controls solution. Utilizing PRIMEX® Process PRO™ innovative modular programming architecture, PRIMEX® offers RO Wise™ control systems that provide; continuous monitoring of process flow variables, elapsed run time meters, control and position status of valves, totalization of all system flows and automatic membrane flush events. For systems equipped with adequate instrumentation, many advanced features are available.



EFS - CTM



RO CONTROLLER



CUSTOM OEM SOLUTIONS

Let PRIMEX® become your preferred custom panel project partner - working with you from process control panel concept to manufacturing. PRIMEX® has the ability to handle low volume production runs as well as highly repeatable high volume production runs. Custom embedded solutions available for high volume proprietary designs.

Concept:

PRIMEX® utilizes deep engineering resources across multiple locations to develop a custom process controls solution for you. New project designs begin by listening to what you need and developing the solution to meet your individual specifications.

Design:

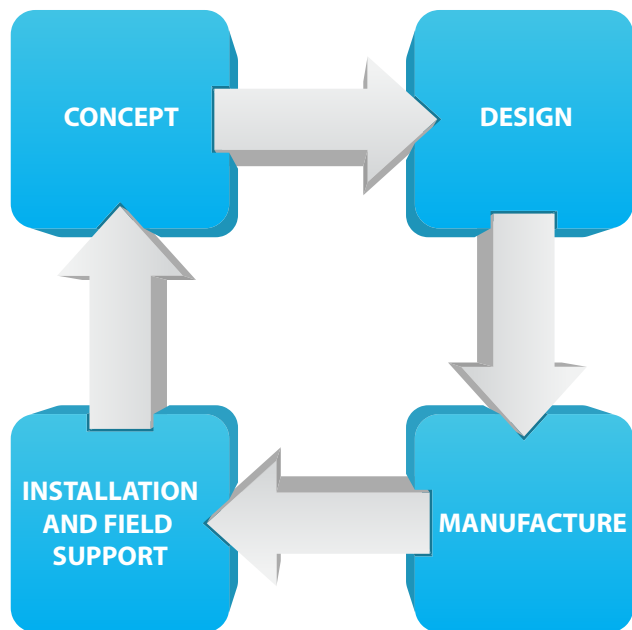
As a collaborative process our PRIMEX® engineers work with you to develop a detailed quote and process control solutions design. Product private labeling is also offered and the ability to customize installation or manual materials that ship with the control system. Once approved the project moves into the manufacturing phase.

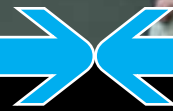
Manufacture:

With multiple production locations to serve you, once a purchase order is received PRIMEX® moves the project into the manufacturing phase which includes developing bills of materials, design schematics and panel layout drawings. Products are produced in UL Listed panel shops insuring the highest quality and attention to detail.

Installation and Field Support:

PRIMEX® Process Control solutions are backed by the best customer service in the industry and offers additional field services. Our large engineering team operating from four locations insures you highly responsive service and support.





ABOUT PRIMEX®

PRIMEX® delivers over 40 years of expertise in process water controls and hundreds of years of combined engineering and electrical controls experience while using the latest technology to deliver energy efficient, cost effective products for customers.

We don't have employees; we have employee-owners who have a vested interest in the success of our customers' projects. We are 100% committed to developing customer partnerships by providing fast turnaround on quotes, submittals and delivery; maintaining high standards for quality and reliability; and investing in the research and development of innovative new products to expand our broad product offering.

Multiple design and production facilities located across the United States ensure customers seamless, high quality pump control solutions. PRIMEX® control systems carry UL 508A, UL 698A, UL NNNY, CSA Certification and other agency approvals as specified.

We're proud to be an active supporter of these industry associations:



844-4PRIMEX (477-4639)
WWW.PRIMEXCONTROLS.COM

Ashland, OH 800-363-5842
Clearwater, FL 800-349-1905
Detroit Lakes, MN 888-342-5753
Milford, OH 513-831-9959
Plymouth, MN 763-559-0568

© 2013 SJE-Rhombus® Rev 07/14 PRIMEX is a trademark of SJE-Rhombus®